



1-800-528-0139 • www.temp-housing.com

Courtney Ridge Apartments

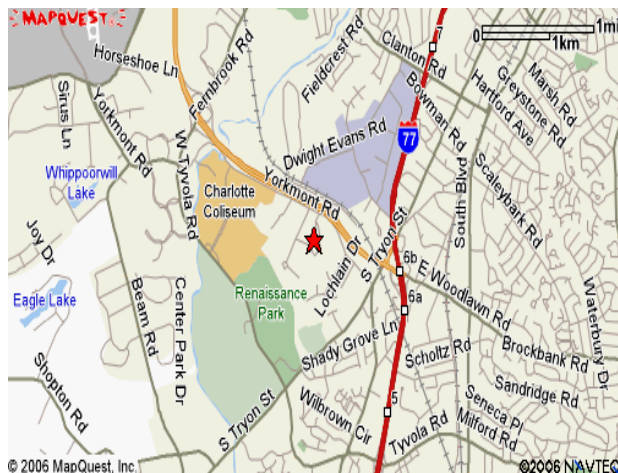
920 York Mont Ridge Lane
Charlotte, NC 28217



DIRECTIONS:

From I-77 N to S Tryon St (exit 6B). Take right, at second light turn right on Yorkmont Road. We are approximately 1 mile on left.

From I-77 S, take Billy Graham Pkwy. (exit 6B), left on S. Tryon. Take an immediate right on Yorkmont.



South West Charlotte, North Carolina

Package Features

- ❖ Complete Furniture Package
- ❖ Deluxe Housewares Package
- ❖ Bed, Bath, & Kitchen Linens
- ❖ Artwork and Greenery
- ❖ Expanded Cable
- ❖ Television
- ❖ Utilities (Electric, Water, & Gas)
- ❖ Microwave
- ❖ Full Size Washer and Dryer

Apartment Features

- ❖ Security Alarms
- ❖ Vaulted Ceilings
- ❖ Screened Patio/ Balcony*
- ❖ Spacious Closets
- ❖ Ceiling Fans

Property Features

- ❖ Fitness Center
- ❖ Resort Style Swimming Pool
- ❖ Business Center
- ❖ Clubhouse

*In Select Units

For Reservations & Information

1-800-528-0139

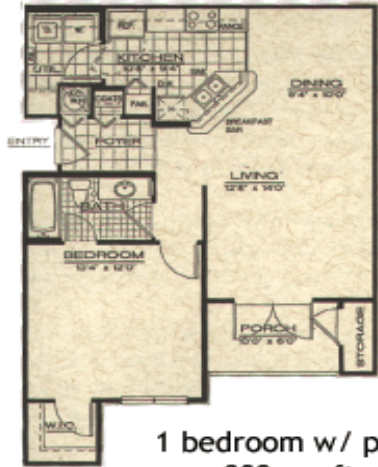
info@temp-housing.com

Visit Our Website:

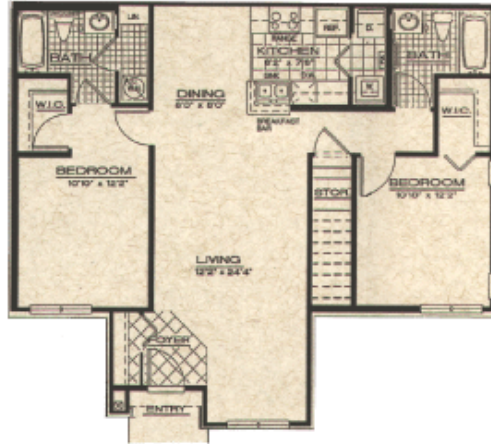
<http://www.temp-housing.com>



Floor Plans



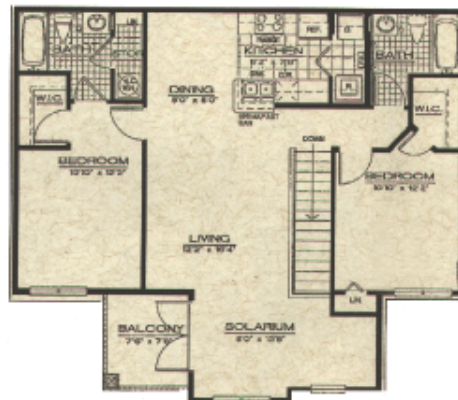
1 bedroom w/ patio
889 sq. ft.



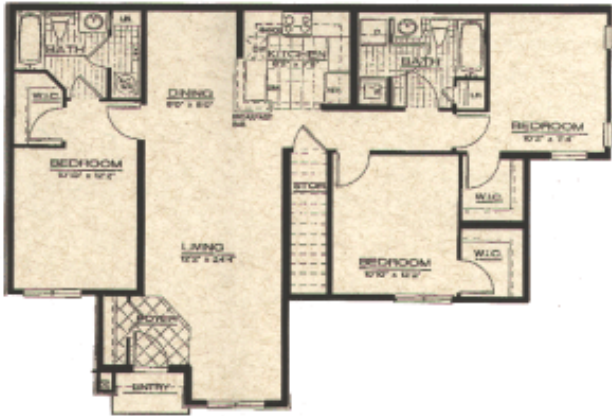
2 bedroom w/ private entry,
1121 sq. ft.



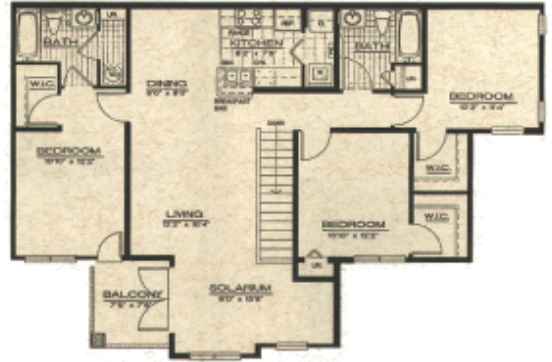
2 bedroom w/ patio
1168 sq. ft.



2 bedroom w/solarium,
balcony & private entry,
vaulted ceiling
1266 sq. ft.



3 bedroom w/private entry
1344 sq. ft.



3 bedroom w/solarium,
balcony & private entry,
vaulted ceiling
1491 sq. ft.